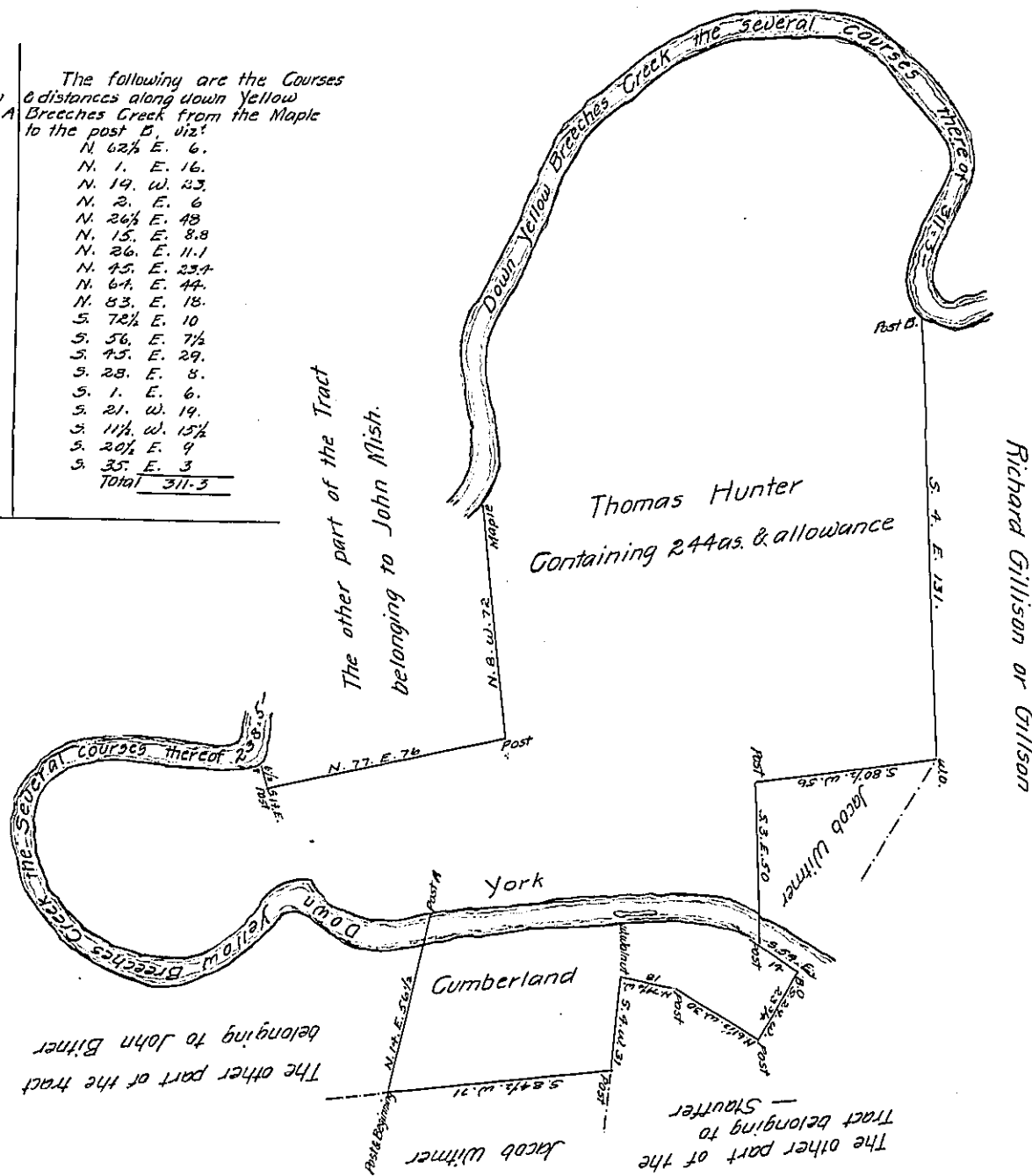


The following are the Courses and distances along down Yellow Breeches Creek from the post A to the * Mark.

- S. 7 $\frac{1}{2}$. W. 14
- N. 70 $\frac{1}{2}$. W. 20
- N. 40. W. 3
- S. 67. W. 16
- S. 20 $\frac{1}{2}$. W. 6
- S. 51. W. 18
- S. 74. W. 9 $\frac{1}{2}$
- N. 84. W. 16 $\frac{1}{2}$
- N. 60 $\frac{1}{2}$. W. 22.
- N. 43. W. 10.
- N. 23 $\frac{1}{2}$. W. 8.
- N. 2 $\frac{1}{2}$. W. 14
- N. 21 $\frac{1}{2}$. E. 10.2
- N. 59. E. 5.1
- N. 87. E. 3.2
- N. 89. E. 2.9
- Total 238.5

The following are the Courses & distances along down Yellow Breeches Creek from the Maple to the post B, viz:

- N. 62 $\frac{1}{2}$. E. 6.
- N. 1. E. 16.
- N. 14. W. 23.
- N. 2. E. 6
- N. 26 $\frac{1}{2}$. E. 48
- N. 15. E. 8.8
- N. 26. E. 11.1
- N. 45. E. 23.4
- N. 64. E. 44.
- N. 83. E. 18.
- S. 72 $\frac{1}{2}$. E. 10
- S. 56. E. 7 $\frac{1}{2}$
- S. 45. E. 29.
- S. 28. E. 8.
- S. 1. E. 6.
- S. 21. W. 19.
- S. 11 $\frac{1}{2}$. W. 15 $\frac{1}{2}$
- S. 20 $\frac{1}{2}$. E. 9
- S. 35. E. 3
- Total 311.5



A Draught of a tract of land, Situate part in Newbury township York County and part in Allen township Cumberland County, Containing as above set forth two hundred and forty-four acres & allowance. Being part of a larger tract of 290 $\frac{1}{2}$ as. & allowance, which was Resurveyed by John Forsyth late D.S. on the 27th. day of May Anno Domini 1794, by the lines formerly run in pursuance of a Warrant to Thomas Hunter dated the 5th. day of July 1745. Resurveyed & divided off from the said larger tract of Land the—day of August Anno Domini 1811.

To Andrew Porter Esqr.
Surveyor General
Lancaster Pa.

per
Jacob Spangler D.S.

IN TESTIMONY that the above is a copy of the original remaining on file in the Department of Internal Affairs of Pennsylvania, made conformably to an Act of Assembly approved the 16th day of February, 1833, I have hereunto set my Hand and caused the Seal of said Department to be affixed at Harrisburg, this
third day of August 1905

Joachin Brown
Secretary of Internal Affairs.